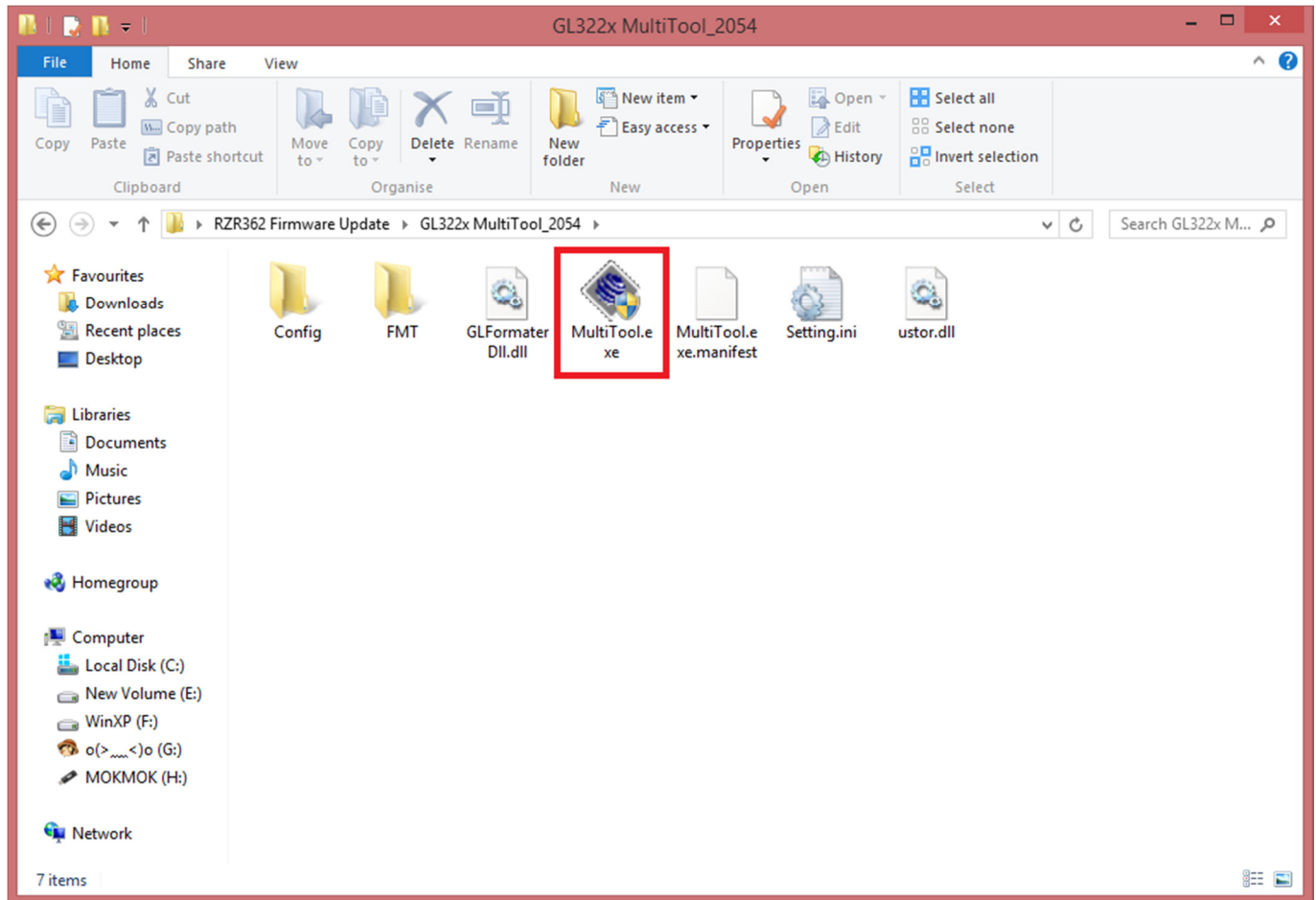


# RZR362 Firmware Update Introduction

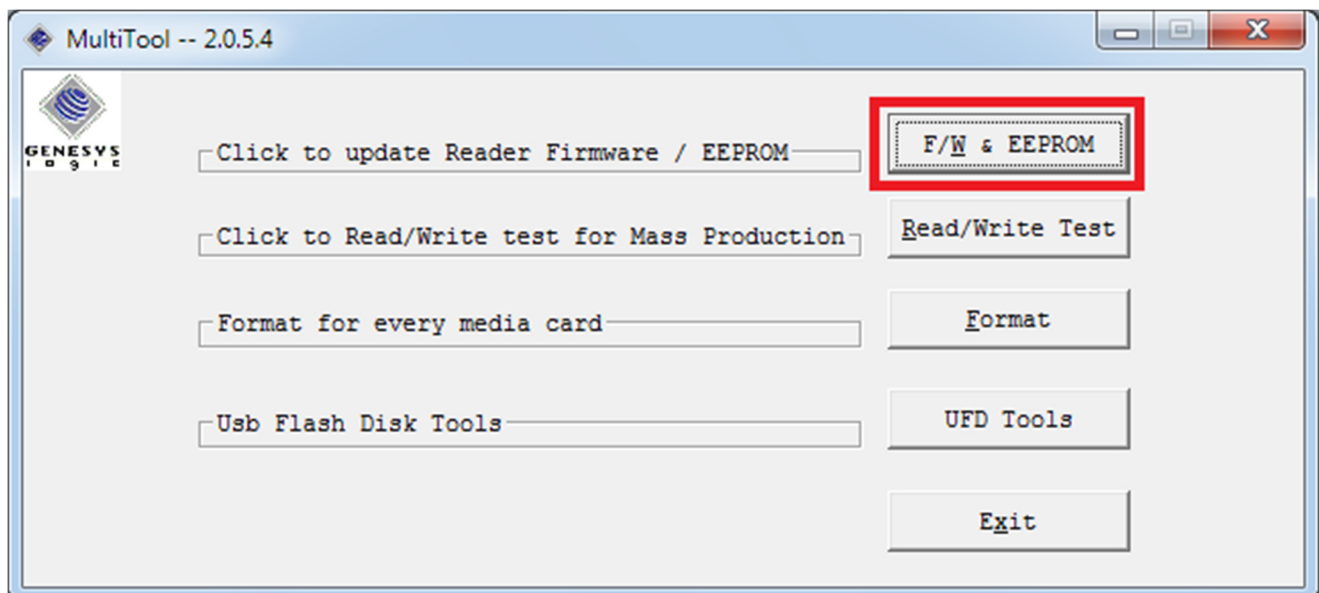
## Installation and Execution

MultiTool is assist your Card Reader configures and controls firmware update. Please follow the five steps to update and verify your firmware. After these five steps, your firmware should be correctly written.

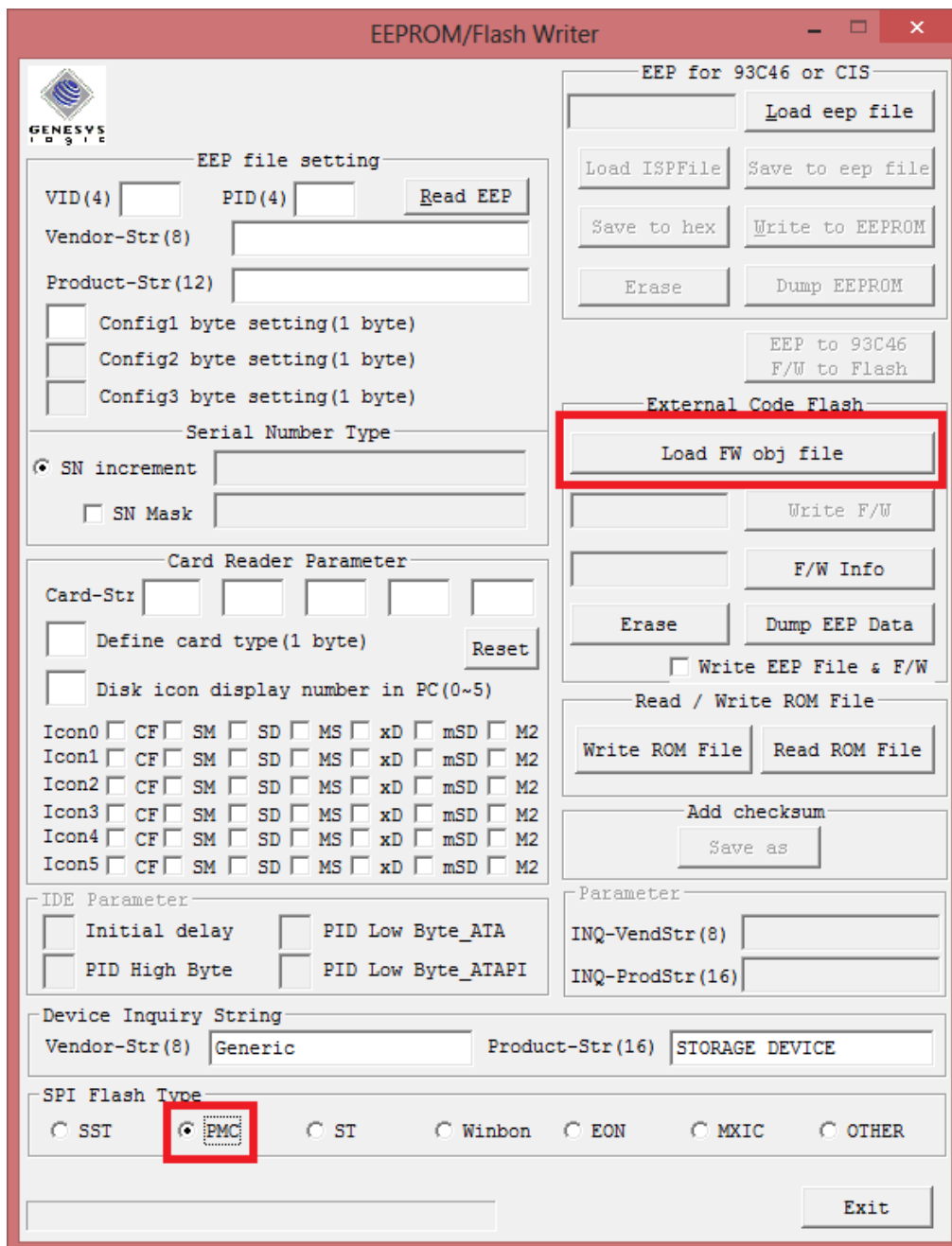
### 1. Connect the card reader to available USB 2.0 port and Open the (Multitool.exe).



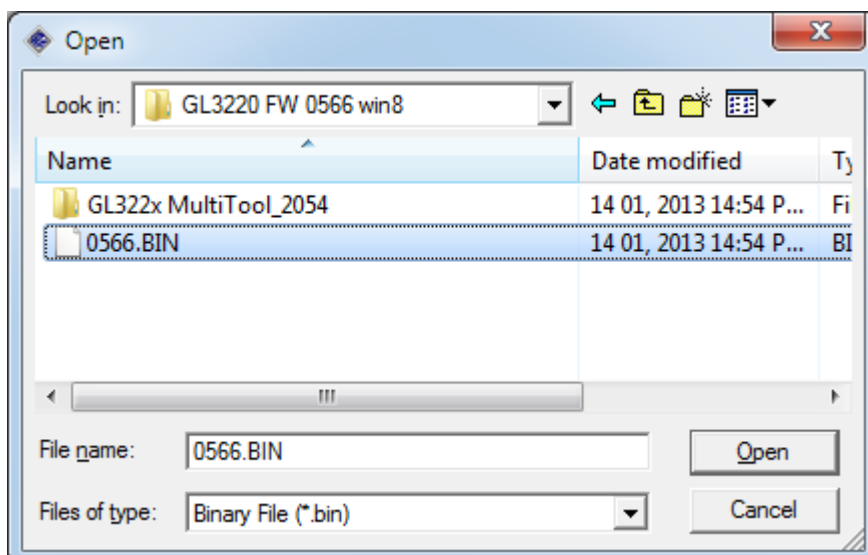
### 2. Choose the (F/W & EEPROM).



3. At the (SPI Flash Type) Choose (PMC) and at the (External Code Flash) choose (Load FW obj file).




4. Load the target (0566.BIN) file.



5. Click the (Write F/W) to start update the firmware.

EEPROM/Flash Writer --> C:\Users\Mok\Desktop\RZR362 Firmware U... - □ ×

 GENESYS

EEP file setting

VID(4)  PID(4)

Vendor-Str(8)

Product-Str(12)

☐ Config1 byte setting(1 byte)

☐ Config2 byte setting(1 byte)

☐ Config3 byte setting(1 byte)

Serial Number Type

☒ SN increment

☐ SN Mask

Card Reader Parameter

Card-Str

☐ Define card type(1 byte)

☐ Disk icon display number in PC(0~5)

Icon0 ☐ CF ☐ SM ☐ SD ☐ MS ☐ xD ☐ mSD ☐ M2

Icon1 ☐ CF ☐ SM ☐ SD ☐ MS ☐ xD ☐ mSD ☐ M2

Icon2 ☐ CF ☐ SM ☐ SD ☐ MS ☐ xD ☐ mSD ☐ M2

Icon3 ☐ CF ☐ SM ☐ SD ☐ MS ☐ xD ☐ mSD ☐ M2

Icon4 ☐ CF ☐ SM ☐ SD ☐ MS ☐ xD ☐ mSD ☐ M2

Icon5 ☐ CF ☐ SM ☐ SD ☐ MS ☐ xD ☐ mSD ☐ M2

IDE Parameter

☐ Initial delay ☐ PID Low Byte\_ATA

☐ PID High Byte ☐ PID Low Byte\_ATAPI

Device Inquiry String

Vendor-Str(8)  Generic Product-Str(16)  STORAGE DEVICE

SPI Flash Type

☐ SST ☒ PMC ☐ ST ☐ Winbon ☐ EON ☐ MXIC ☐ OTHER

EEP for 93C46 or CIS

External Code Flash

☐ Write EEP File & F/W

Read / Write ROM File

Add checksum

Parameter

INQ-VendStr(8)

INQ-ProdStr(16)

After successfully write the target firmware, there will be a big green “OK” shown in the bottom of the page. Please note that you must replug again to validate the updated firmware.

EEPROM/Flash Writer --> C:\Users\Mok\Desktop\RZR362 Firmware U...

**GENESYS**

**EEP file setting**

VID(4)  PID(4)

Vendor-Str(8)

Product-Str(12)

☐ Config1 byte setting(1 byte)

☐ Config2 byte setting(1 byte)

☐ Config3 byte setting(1 byte)

**Serial Number Type**

☒ SN increment

☐ SN Mask

**EEP for 93C46 or CIS**

**External Code Flash**

**ROM File**

**Add checksum**

**Parameter**

INQ-VendStr(8)

INQ-ProdStr(16)

**IDE Parameter**

☐ Initial delay ☐ PID Low Byte\_ATA

☐ PID High Byte ☐ PID Low Byte\_ATAPI

**Device Inquiry String**

Vendor-Str(8)  Product-Str(16)

**SPI Flash Type**

☐ SST ☒ PMC ☐ ST ☐ Winbon ☐ EON ☐ MXIC ☐ OTHER

F/W[with EEP] Program and Verify finished.

**OK**

**Info**

You must replug-in device for new firmware validate.